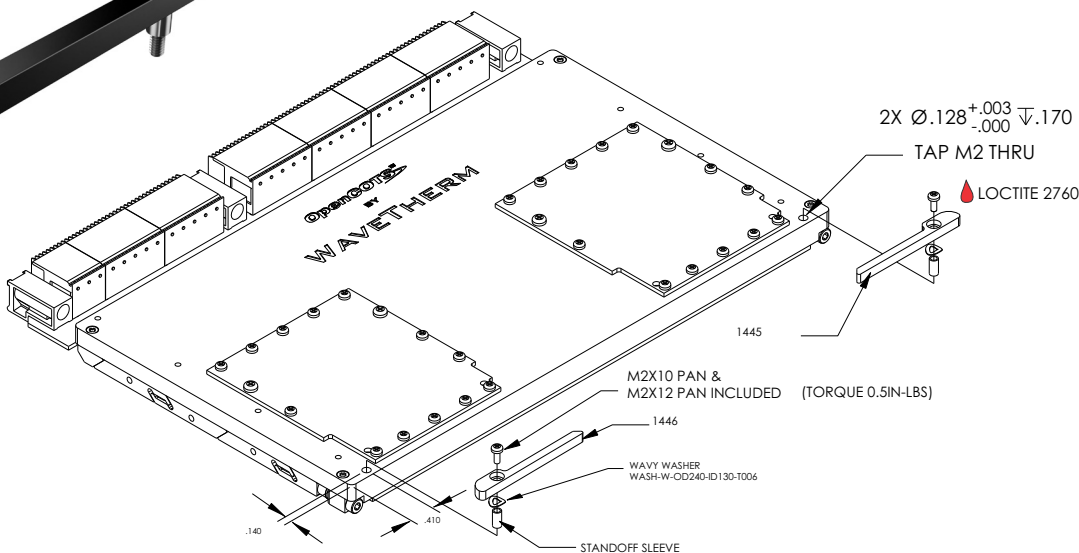


The OpenCOTS 6U ejectors represent an innovative approach to create a field replaceable inject / eject handle for cPCI and VME/VPX designs. The ejector handles are ergonomically designed to provide a mechanical advantage entering and exiting a chassis slot.

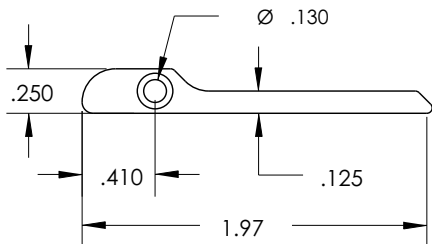
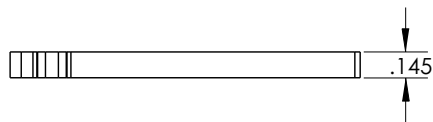
OPTIMIZED FOR VITA 48.2 AND cPCI



FEATURES

- Field replaceable Injection / ejection
- VITA 48.2 compliant
- VME and cPCI compliant
- Low profile design
- Ergonomic design
- 3D models available

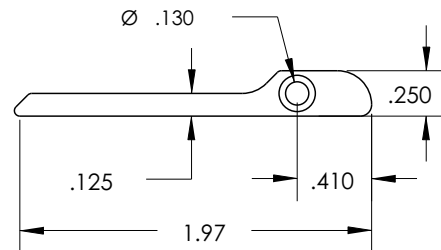
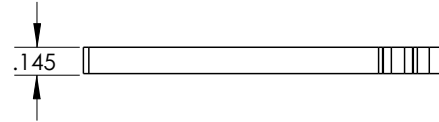
#1446 (LEFT)



MATERIALS

Body:
Aluminum AL7075-T7351
Hardware:
300 Series Stainless Steel
(passivated per AMS - 2700)

#1445 (RIGHT)



PART NUMBER BUILDER

1446 - XX - XXXX

Ejector Style

RIGHT SIDE [1445]
LEFT SIDE [1446]

Finish

[BA]
[BH]
[CC]
[CG]
[EN]

Mounting

[1875] - .1875" STANDOFF, M2 SCREWS & WASHER
[250] - .250" STANDOFF, M2 SCREWS & WASHER
[3125] - .3125" STANDOFF, M2 SCREWS & WASHER

See last page for more plating info

UNLESS OTHERWISE SPECIFIED
DIMENSIONS ARE IN INCHES

TOLERANCES:
TWO PLACE DECIMAL ±.01
THREE PLACE DECIMAL ±.005

- BLACK ANODIZE PER MIL-A-8625, TYPE II, CLASS 2 [BA]
- HARD BLACK ANODIZE PER MIL-A-8625, TYPE III, CLASS 2 [BH]
- CHEMICAL FILM CLEAR [CC]
- CHEMICAL FILM GOLD [CG]
- ELECTROLESS NICKEL [EN]

Standard material specs for WaveTherm's SOLIDWEDGE™, injector/ejectors, and OpenCOTS products.

ASSEMBLY HARDWARE



300 SERIES STAINLESS STEEL

| Compliance | Specification | Use Case |
|------------|----------------|--|
| ✓ DFARS | Passivated per | Standard material for screws, nuts, washers, and SOLIDWEDGE™ straps in WaveTherm product assemblies. |
| ✓ RoHS | AMS-2700 | |
| ✓ REACH | | |

ALUMINUM PLATING



BLACK ANODIZED - BA

| Compliance | Specification | Properties and Use Case |
|------------|--------------------|--|
| ✓ RoHS | MIL-A-8625 | Provides reliable corrosion resistance and durability. Ideal for use in demanding applications requiring high insertion/extraction counts. |
| ✓ REACH | Type II Class 2 | |



BLACK ANODIZED HARDENED - BH

| Compliance | Specification | Properties and Use Case |
|------------|---------------------|---|
| ✓ RoHS | MIL-A-8625 | Provides superior corrosion resistance and high durability. Ideal for use in harsh and rugged environments with high insertion/extraction counts. |
| ✓ REACH | Type III Class 2 | |



CHEMICAL FILM CLEAR - CC

| Compliance | Specification | Properties and Use Case |
|------------|------------------------------|---|
| ✓ RoHS | MIL-DTL-5541 | Provides good corrosion resistance and electrical conductivity with lower durability. Not ideal for high insertion/extraction counts. |
| ✓ REACH | Type II Class 1A Clear | |



CHEMICAL FILM GOLD - CG

| Compliance | Specification | Properties and Use Case |
|------------|----------------------------|---|
| ✗ RoHS | MIL-DTL-5541 | Provides good electrical conductivity with lower durability. Not suited for high insertion/extraction counts. |
| ✗ REACH | Type I Class 1A Gold | |
| | or* Class 1A Gold | |



ELECTROLESS NICKEL - EN

| Compliance | Specification | Properties and Use Case |
|------------|--|--|
| ✓ RoHS | MIL-C-26074 | Provides excellent thermal performance and excellent electrical conductivity. Ideal for high-performance thermal management. |
| ✓ REACH | Class 4 Grade B | |
| | or* AMS-C-26074 Class 4 Grade B | |

Images for demonstration only

*varies based on plating vendor's certificates of conformance