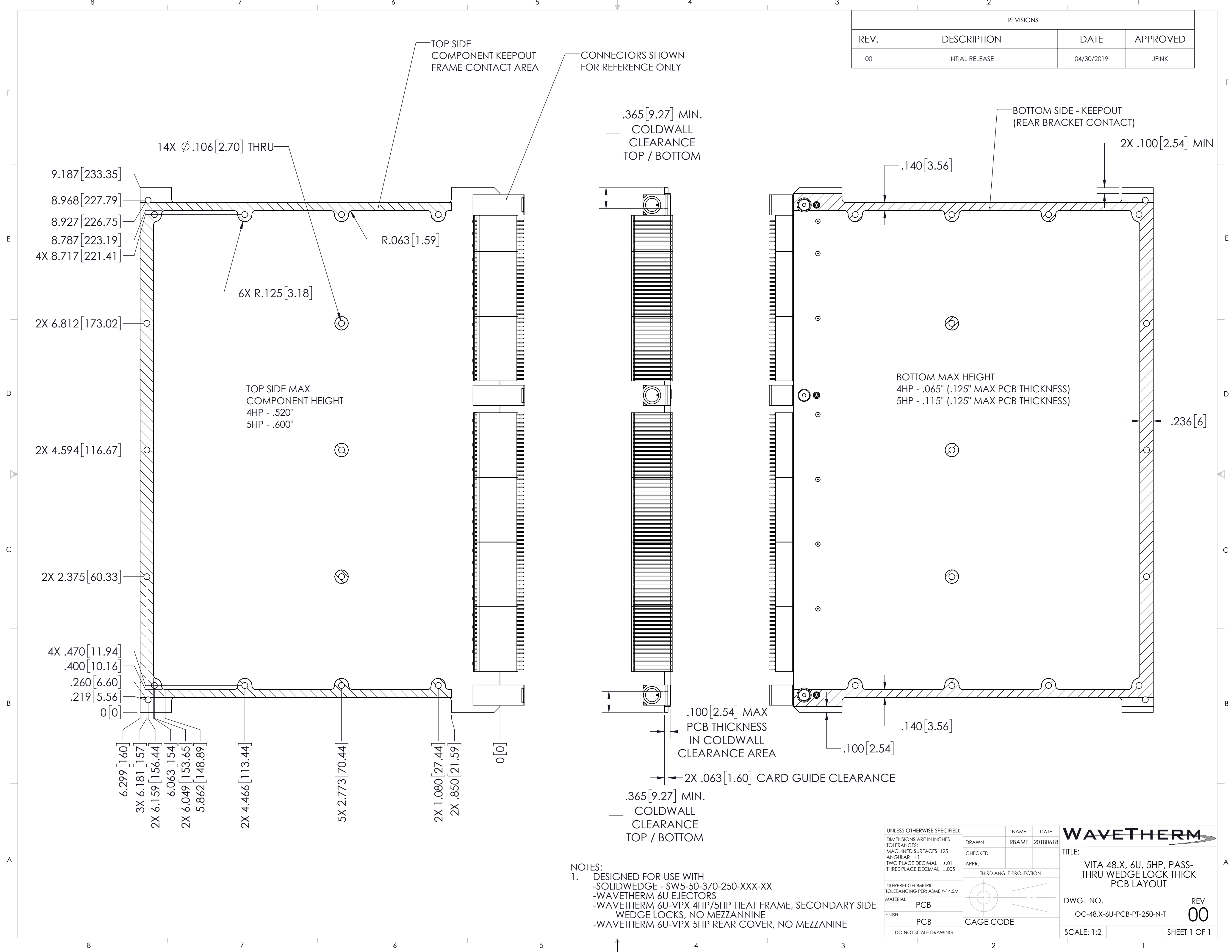


REVISIONS			
REV.	DESCRIPTION	DATE	APPROVED
00	INITIAL RELEASE	04/30/2019	JFINK



NOTES:
 1. DESIGNED FOR USE WITH
 -SOLIDWEDGE - SW5-50-370-250-XXX-XX
 -WAVETHERM 6U EJECTORS
 -WAVETHERM 6U-VPX 4HP/5HP HEAT FRAME, SECONDARY SIDE WEDGE LOCKS, NO MEZZANINE
 -WAVETHERM 6U-VPX 5HP REAR COVER, NO MEZZANINE

UNLESS OTHERWISE SPECIFIED: DIMENSIONS ARE IN INCHES TOLERANCES: MACHINED SURFACES 12S ANGULAR $\pm 1^\circ$ TWO PLACE DECIMAL $\pm .01$ THREE PLACE DECIMAL $\pm .005$	DRAWN RBAME 20180618	NAME RBAME	DATE 20180618	WAVETHERM	
INTERPRET GEOMETRIC TOLERANCING PER: ASME Y-14.5M	CHECKED	APPR.	THIRD ANGLE PROJECTION		TITLE: VITA 48.X, 6U, 5HP, PASS-THRU WEDGE LOCK THICK PCB LAYOUT
MATERIAL PCB	FINISH PCB	CAGE CODE	DO NOT SCALE DRAWING	DWG. NO. OC-48.X-6U-PCB-PT-250-N-T	REV 00
				SCALE: 1:2	SHEET 1 OF 1