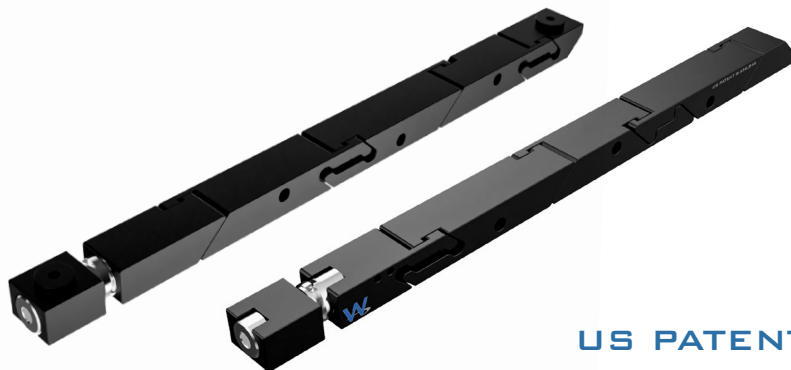


The SOLIDWEDGE™ is a breakthrough technology that allows conduction cooled modules to operate at higher thermal loads in higher temperature environments.

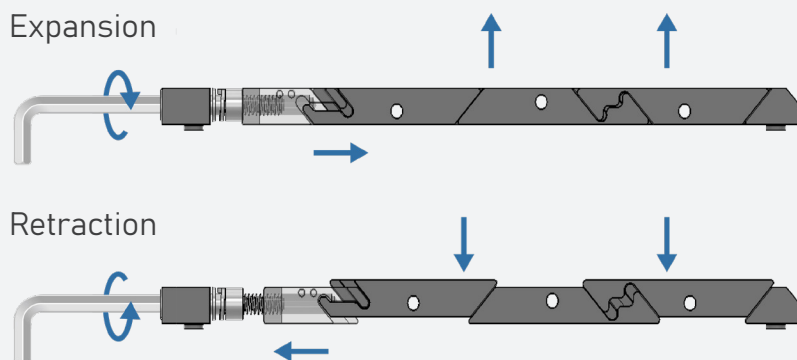
## OPTIMIZED FOR VITA 48.2 AND CPCI



**US PATENT  
8,456,846**

## POSITIVE RETRACTION

Adjacent wedge segments are connected to prevent a stuck wedge lock. Turning the drive screw counterclockwise retracts the threaded drive wedge, pulling each of the connected segments down to their relaxed position.



SW5 Pictured

## THERMAL RESISTANCE

0.11 °C/W Resistance per Card Edge

## FEATURES

- 800 lb Clamping Force
- Mass: 21.7 g
- #8 Drive Screw
- Zero Insertion Force
- Low Profile Design
- Self-Retracting Segments
- Superior Plating Endurance
- Optimized for VITA Specifications
- Models Available for Download
- Torque to 8-15 in-lbs

## MATERIALS

Active Wedge Segments: 6061-T6511

Front Mounting Block: 7075-T7351

Screws, Nuts, Washers:  
300 Series Stainless Steel  
(passivated per AMS - 2700)

## 3D MODEL:

<https://a360.co/2WUp96M>

The SOLIDWEDGE™ design provides three times the thermal contact area of conventional wedge locks. The design also features a larger screw size, which creates higher contact forces between the heat frame and cold wall surfaces, significantly improving thermal performance.

The interconnected links of the SOLIDWEDGE™ feature positive retraction of all segments without the use of springs or other mechanisms.

## PART NUMBER BUILDER

### Required

SW5		475		260		365		XXX		XX		YY					
Wedge:		Spacing:		Height:		Width:		Hex:		Finish:		1		2		3	
				0.260"		0.365"						[BV] - BELLEVILLE WASHERS [NL] - NYLOK LOCK PATCH [HC] - HELICOIL INSERTION					
		4.75" MOUNTING HOLE SPACING															
SW - SOLIDWEDGE 5 - ACTIVE SEGMENTS								3/32" HEX KEY - [332] M2.5 HEX KEY - [M25] 7/64" HEX KEY - [764]									
<div style="display: flex; justify-content: space-between;"> <div> <div style="width: 20px; height: 10px; background-color: black;"></div> BLACK ANODIZE PER MIL-A-8625, TYPE II, CLASS 2 [BA] <div style="width: 20px; height: 10px; background-color: black;"></div> HARD BLACK ANODIZE PER MIL-A-8625, TYPE III, CLASS 2 [BH] <div style="width: 20px; height: 10px; background-color: white;"></div> CHEMICAL FILM CLEAR [CC] <div style="width: 20px; height: 10px; background-color: gold;"></div> CHEMICAL FILM GOLD [CG] <div style="width: 20px; height: 10px; background-color: silver;"></div> ELECTROLESS NICKEL [EN] </div> <div>See last page for more plating info</div> </div>																	

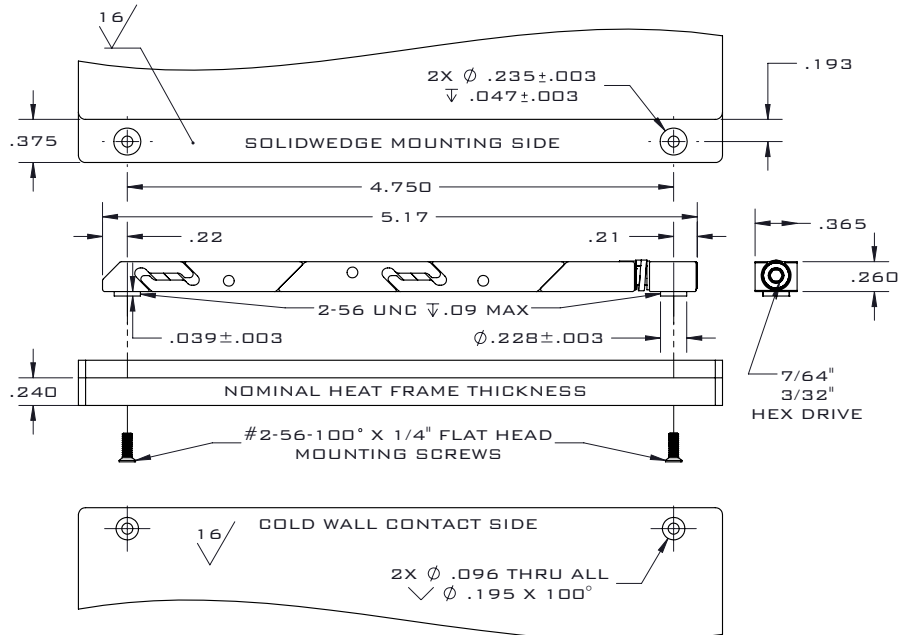
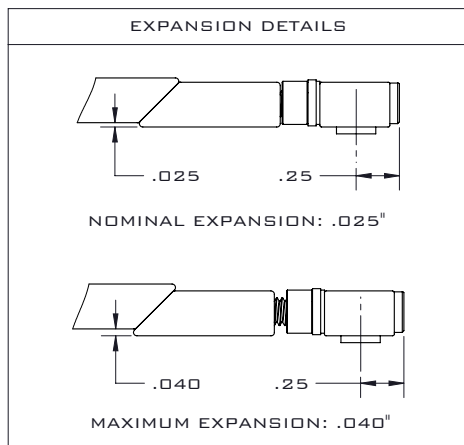
RECOMMENDED PART NUMBER: SW5-475-260-365-332-BA-BV-HC

## MOUNTING DETAILS

UNLESS OTHERWISE SPECIFIED

DIMENSIONS ARE IN INCHES.

TOLERANCES:  
TWO PLACE DECIMAL: ±.01  
THREE PLACE DECIMAL: ±.005



Standard material specs for WaveTherm's SOLIDWEDGE™, injector/ejectors, and OpenCOTS products.

### ASSEMBLY HARDWARE



#### 300 SERIES STAINLESS STEEL

Compliance	Specification	Use Case
✓ DFARS	Passivated per	Standard material for screws, nuts, washers,
✓ RoHS	AMS-2700	and SOLIDWEDGE™ straps in WaveTherm product
✓ REACH		assemblies.

### ALUMINUM PLATING



#### BLACK ANODIZED - BA

Compliance	Specification	Properties and Use Case
✓ RoHS	MIL-A-8625	Provides reliable corrosion resistance and durability.
✓ REACH	Type II	Ideal for use in demanding applications requiring high
	Class 2	insertion/extraction counts.



#### BLACK ANODIZED HARDENED - BH

Compliance	Specification	Properties and Use Case
✓ RoHS	MIL-A-8625	Provides superior corrosion resistance and high
✓ REACH	Type III	durability. Ideal for use in harsh and rugged
	Class 2	environments with high insertion/extraction counts.



#### CHEMICAL FILM CLEAR - CC

Compliance	Specification	Properties and Use Case
✓ RoHS	MIL-DTL-5541	Provides good corrosion resistance and electrical
✓ REACH	Type II	conductivity with lower durability. Not ideal for high
	Class 1A	insertion/extraction counts.
	Clear	



#### CHEMICAL FILM GOLD - CG

Compliance	Specification	Properties and Use Case
✗ RoHS	MIL-DTL-5541	MIL-C-5541
✗ REACH	Type I	Class 1A
	Class 1A	Gold
	Gold	Provides good electrical conductivity
		with lower durability. Not suited for
		high insertion/extraction counts.



#### ELECTROLESS NICKEL - EN

Compliance	Specification	Properties and Use Case
✓ RoHS	MIL-C-26074	AMS-C-26074
✓ REACH	Class 4	Class 4
	Grade B	Grade B
		Provides excellent thermal
		performance and excellent electrical
		conductivity. Ideal for high-performance
		thermal management.

Images for demonstration only

\*varies based on plating vendor's certificates of conformance