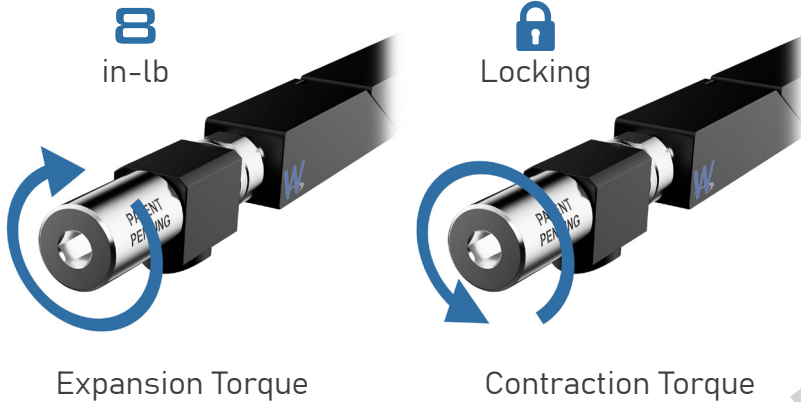


The Torque Limiting SOLIDWEDGE™ limits torque as the SOLIDWEDGE™ is expanded, creating consistent clamping forces for maintainers without the need for torque drivers or specialized tools. The slip clutch ratchet mechanism prevents over-tightening and provides audible feedback when the specified torque is reached. Torque is not limited in reverse, ensuring retraction of the SOLIDWEDGE™.

OPTIMIZED FOR 2 LEVEL MAINTENANCE



TORQUE TOLERANCE

8 ±1 in-lb

FEATURES

- Torque Limited Expansion
- Full Torque Contraction
- Ideal for 2 Level Maintenance (2LM)
- Audible + Tactile Ratchet Feedback
- RoHS + REACH + ITAR Compliant
- Low Profile Design

MECHANISM MATERIALS

Screw, Pin, Clip:

300 Series Stainless Steel
(passivated per AMS - 2700)

Drive Head, Flat Washer: Nitronic 60

Plastic Washer: PEEK

Spring: 17-7 SS

Lubrication: MIL-PRF-27617, Vacuum

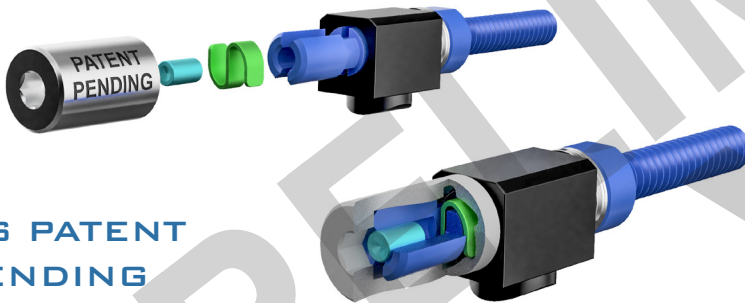
WEDGELOCK MATERIALS

Active Wedge Segments: 6061-T6511

Front Mounting Block: 6061-T6511

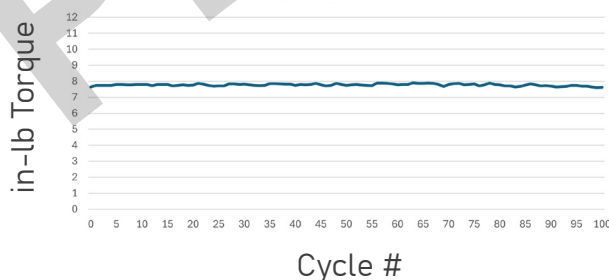
Lock Nut: Nitronic 60

TORQUE LIMITING SLIP CLUTCH



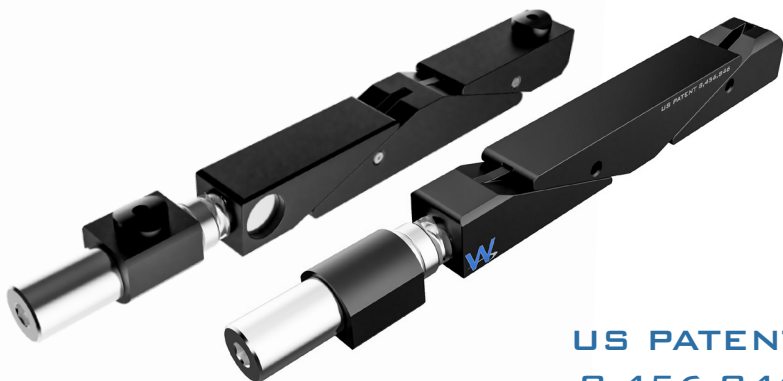
US PATENT
PENDING

TIGHTENING TORQUE



The SOLIDWEDGE™ is a breakthrough technology that allows conduction cooled modules to operate at higher thermal loads in higher temperature environments.

OPTIMIZED FOR VITA 48 AND CPCI

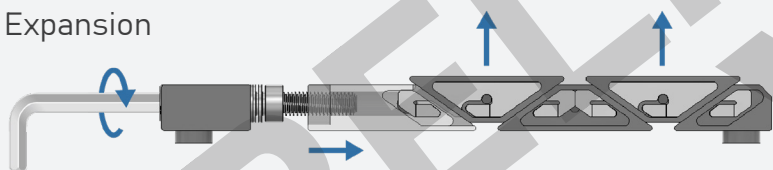


**US PATENT
8,456,846**

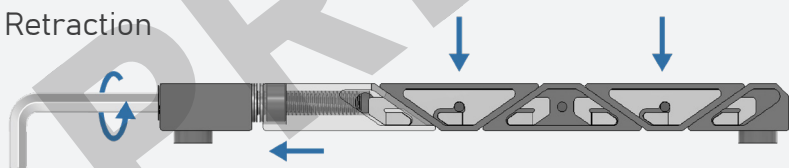
POSITIVE RETRACTION

Adjacent wedge segments are connected to prevent a stuck wedge lock. Turning the drive screw counterclockwise retracts the threaded drive wedge, pulling each of the connected segments down to their relaxed position.

Expansion



Retraction



SW5 Pictured

THERMAL RESISTANCE

~TBD °C/W Resistance per Card Edge

FEATURES

- Torque Limiting Slip Clutch Ratchet
- TBD lb Clamping Force
- Mass: 17 g
- #6-32 Drive Screw
- Zero Insertion Force
- Low Profile Design
- Self-Retracting Segments
- Superior Plating Endurance
- Optimized for VITA Specifications
- Models Available for Download

SELF LOCKING THREADS

The EMUGE Self-Lock™ locking feature is integrated into the lock nut and works without any additional mechanical or chemical locking devices, therefore temperature variations do not noticeably affect it. This eliminates the need for secondary locking features and reduces FOD. <https://info.emuge.com/self-lock>

3D MODEL:

<https://a360.co/4msxrbY>

The SOLIDWEDGE™ design provides three times the thermal contact area of conventional wedge locks. The design also features a larger screw size, which creates higher contact forces between the heat frame and cold wall surfaces, significantly improving thermal performance.

The interconnected links of the SOLIDWEDGE™ feature positive retraction of all segments without the use of springs or other mechanisms.

PART NUMBER BUILDER

Required

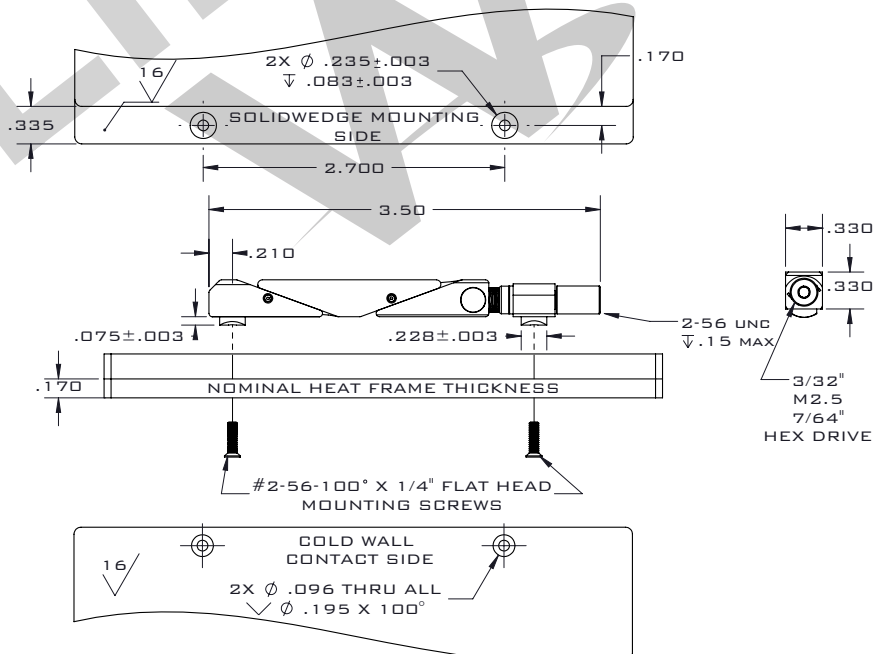
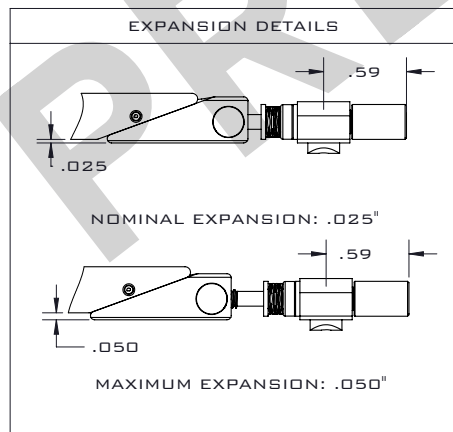
Additional Specifications

SWT3		27		330		330		XXX		XX		20D		YY	
Wedge:		Spacing:		Height: 0.330"		Width: 0.330"		Hex:		Finish:		1		2	
		2.7" MOUNTING HOLE SPACING										20° WEDGE SEGMENTS			
SWT - SOLIDWEDGE T - TORQUE LIMITING 3 - ACTIVE SEGMENTS				3/32" HEX KEY - [332] M2.5 HEX KEY - [M25] 7/64" HEX KEY - [764]											
<div style="display: flex; align-items: center;"> <div style="width: 20px; height: 10px; background-color: black; margin-right: 5px;"></div> <div>BLACK ANODIZED HARDENED WITH TEFLON</div> </div> <div style="display: flex; align-items: center;"> <div style="width: 20px; height: 10px; background-color: gray; margin-right: 5px;"></div> <div>ELECTROLESS NICKEL HEX BORON NITRIDE</div> </div>				See last page for more plating info				[BHT] [HXN]							

RECOMMENDED PART NUMBER: SWT3-27-330-330-332-BHT-20D

MOUNTING DETAILS

UNLESS OTHERWISE SPECIFIED
DIMENSIONS ARE IN INCHES.
TOLERANCES:
TWO PLACE DECIMAL: $\pm .01$
THREE PLACE DECIMAL: $\pm .005$



SPECIALITY ALUMINUM PLATING



Images for demonstration only

BLACK ANODIZED HARDENED WITH TEFLON - BHT

Compliance

- ✓ RoHS
- ✓ REACH

Specification

AMS-2482
Type III
Class 2

Properties and Use Case

Provides superior corrosion resistance, high durability and increased lubricity. Ideal for use in harsh and rugged environments with high insertion/extraction counts.



Images for demonstration only

ELECTROLESS NICKEL HEX BORON NITRIDE - HXN

Compliance

- ✓ RoHS
- ✓ REACH

Specification

MIL-C-26074
Class 4
Grade B

and

WaveSlik
Hex Boron Nitride
0.0005" - 0.0007"

Properties and Use Case

Provides excellent thermal performance, excellent electrical conductivity, and increased lubricity. Ideal for high-performance thermal management.